

# Distributed, Private AI Maximizes Enterprise Data Utility

## GateSpeed AI-Based CDN



*Maximizing enterprise data utility with **distributed, private AI.***

GateSpeed’s global, distributed, private AI Content Delivery Network (CDN) enables enterprises to securely deploy AI services such as Retrieval Augmented Generation (RAG) and Large Language Models (LLMs) at the edge or within private cloud environments.

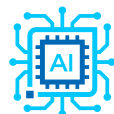
Designed for an era where data security, compliance, and performance are top priorities, the solution helps organizations keep sensitive data and AI workloads within trusted boundaries.

By combining a globally distributed architecture with a privacy-first design, GateSpeed allows enterprises to bring AI closer to users while maintaining control over data residency, governance, and access. The platform empowers organizations to operationalize and scale AI services with confidence, unlocking the value of artificial intelligence while ensuring sensitive information remains protected.

### Key Intel-Enabled Features



Optimized Processing



Efficient Inference



High Traffic Support



Dockerized Deployments

accelerated by **intel.**

- Faster model response with Intel® Gaudi® 2 AI accelerators, with low-latency, high-throughput inference for real-time AI experiences.
- High traffic support enabled by Intel® Gaudi® AI accelerator architecture and software, optimizing on-chip memory management to serve more concurrent users under peak load.
- Easy deployment through a Dockerized architecture that speeds rollout, simplifies scaling, and ensures consistency across environments.

#### Intel Products and Technologies

- [Intel® Gaudi® AI Accelerators](#)
- [Intel® Gaudi® AI Accelerator Software Stack](#)

#### Ordering Guidance:

- [Contact Us | GateSpeed](#)

**Country/Geo:** Worldwide

**Verticals:** Cross-Industry; Entertainment

**Use Cases:** Commercial/Enterprise AI Software

**AI Workload:** Generative AI; LLM

#### Learn more:

- [GateSpeed Website](#)

#### Notices & Disclaimers:

Intel technologies may require enabled hardware, software or service activation. // No product or component can be absolutely secure. // Your costs and results may vary. // Intel Statement on Product Usage: Intel is committed to respecting human rights and avoiding causing or contributing to adverse impacts on human rights. See Intel's [Global Human Rights Principles](#). Intel's products and software are intended only to be used in applications that do not cause or contribute to adverse impacts on human rights. © Intel Corporation, Intel, the Intel logo, Intel Core, and other Intel marks are trademarks of Intel Corporation or its subsidiaries. Other names and brands may be claimed as property of others.